

# CAT 6<sup>c</sup> Component Rated Patch Panel

## INSTALLATION INSTRUCTIONS

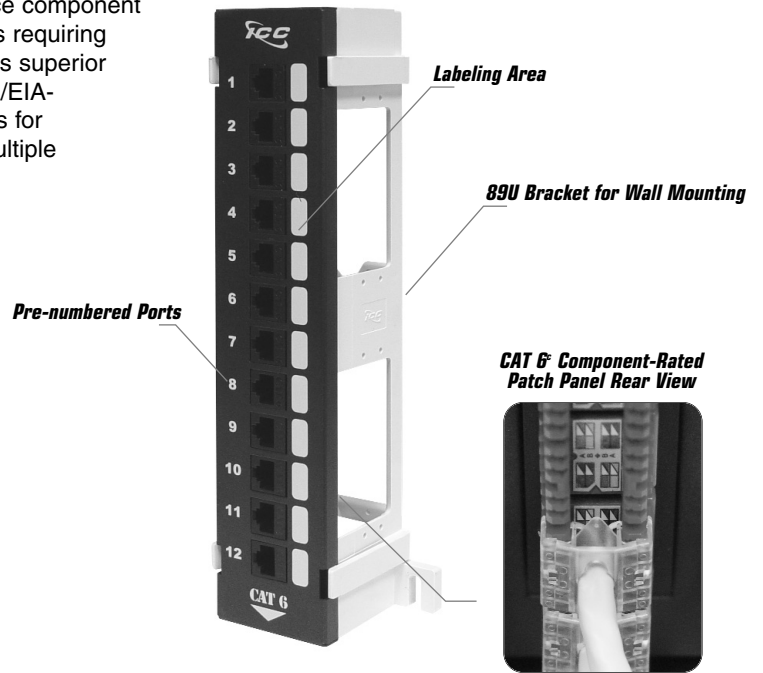
### CAT 6<sup>c</sup> Component Rated Patch Panel

ICC announces the introduction of its new series of high performance component compliant Category 6 patch panel for advanced network applications requiring high speed and increased bandwidth. This new patch panel provides superior performance, exceeding Category 6 component requirements of TIA/EIA-568-B.2.1. Individual port color-coded IDC termination design allows for quick and easy installations and is capable of easily withstanding multiple terminations without damage or loss in connectivity. An integrated TIA/EIA 568 A/B wiring diagram is provided to simplify and clarify installation. The black powder coated reinforced steel construction ensures a high degree of strength and durability.



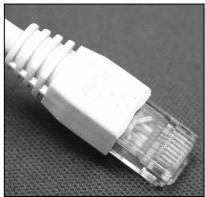
#### ICMPP12V6C PACKAGE INCLUDES:

- A** Patch Panel, Vertical, 12-Port, 1 piece
- B** 89U Mounting Bracket, 1 piece
- C** Termination Caps, 12 pieces
- D** 6" Cable Ties, 6 pieces



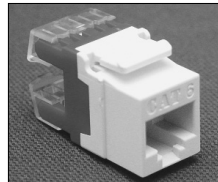
#### Available Accessories

ICC provides a full range of Category 6 cross connect products for all your connecting and patching needs. Please visit our website at [www.icc.com](http://www.icc.com) for complete information.

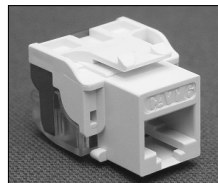


#### Ultra Slim Line Booted Category 6 Patch Cord

ICC's Category 6 patch cords have been 100% tested and verified to surpass Category 6 performance requirements. ICC's CAT 6 patch cords assures minimal cross talk and return loss, high signal quality, and minimizes noise and unwanted emissions. All cable assemblies are designed to mate with ICC's jacks and patch panels providing a finely tuned Category 6 channel with significant headroom. Available in blue, white, gray, red, yellow, black, orange and green, colored CAT 6 patch cords simplify installation by allowing easily identifiable circuits. The patch cord boot has an ultra slim line profile to allow patch cords to fit adjacent to each other in high-density applications.



(HD Connector)



(EZ Connector)

#### Category 6 Modular Connectors

ICC's CAT 6 High Density (HD) and CAT 6 EZ modular connectors are engineered to provide superior performance and reliability, supporting Gigabit Ethernet applications and beyond. The advanced printed circuit board design is tuned to provide optimum signal quality with maximum headroom, allowing it to exceed TIA/EIA Category 6 performance standards. Both offer superior signal quality and noise reduction due to its enhanced Near-End and Far-End Crosstalk cancellation and minimum return losses. The HD design offers a smaller rear footprint maximizing space in confined work areas. The EZ connector's flat back IDC construction offers faster installation through its straight in-line termination design and one piece snap-on termination cap.

ITEM NUMBER	DESCRIPTION
ICPCS601xx*	1 ft., 4 UTP, 24 AWG Stranded
ICPCS603xx*	3 ft., 4 UTP, 24 AWG Stranded
ICPCS605xx*	5 ft., 4 UTP, 24 AWG Stranded
ICPCS607xx*	7 ft., 4 UTP, 24 AWG Stranded
ICPCS610xx*	10 ft., 4 UTP, 24 AWG Stranded
ICPCS614xx*	14 ft., 4 UTP, 24 AWG Stranded
ICPCS620xx*	20 ft., 4 UTP, 24 AWG Stranded
ICPCS625xx*	25 ft., 4 UTP, 24 AWG Stranded

\*xx = WH, GY, BK, BL, GN, OR, RD, YL

ITEM NUMBER	DESCRIPTION
IC1078F6xx*	8 Position 8 Conductor, HD, Category 6
IC1078L6xx*	8 Position 8 Conductor, EZ, Category 6

\*xx = IV, WH, GY, BK, BL, GN, OR, PR, RD, YL, AL

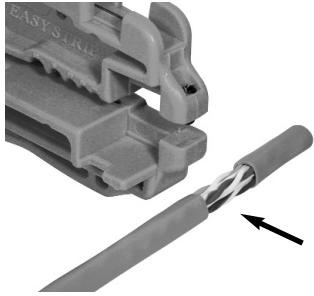
xx = COLORS: IV (Ivory), WH (White), GY (Gray), BK (Black), BL (Blue), GN (Green), OR (Orange), PR (Purple), RD (Red), YL (Yellow), AL (Almond)

PremiumProducts | ProvenPerformance | CompetitivePrices .....: ICC

CUSTOMER CARE / TECHNICAL SUPPORT • CSR@ICC.COM / 888-275-4422 (ASK-4-ICC)

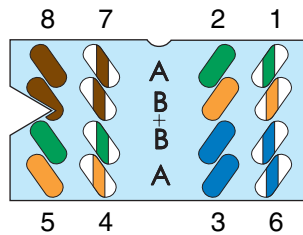
## ASSEMBLY INSTRUCTIONS

### Step 1.



1. Strip off 1.5" inches of cable jacket and bring cable jacket end up to the center of the color code label.

### Step 2.

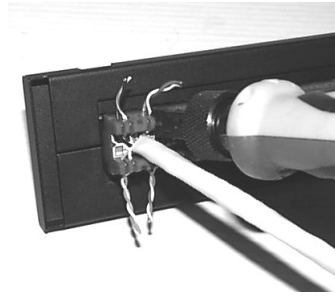


2. Place wires into the proper channels in the termination strips.

A. For T568A wiring, follow the color code marked "A"

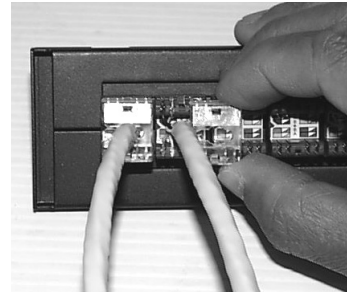
B. For T568B wiring, follow the color code marked "B"

### Step 3.



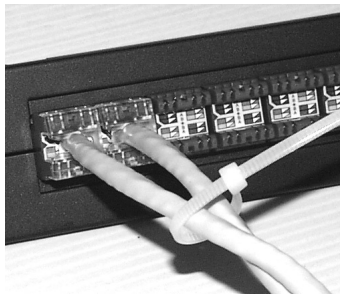
3. Terminate using ICC 110 Punch Down Tool or equivalent. Tool is in-line and perpendicular with IDC's. Cable jacket is centered down between IDC's.

### Step 4.



4. Slide termination caps over the cables and snap into place.

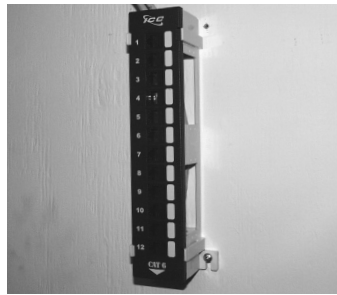
### Step 5.



5. Use cable ties to secure and route cables.

DO NOT OVER TIGHTEN the cable ties.

### Step 6.



6. Upon completing, snap the panel on the 89U mounting bracket and proceed to mount to wall studs or backboard with hardware of your choice.